



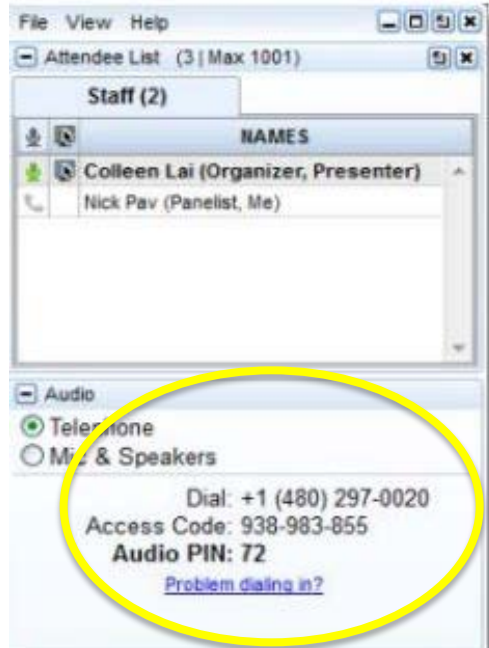
# Healthier Washington Quarterly Webinar: Progress in Year 1

May 3, 2016

# Before we get started, let's make sure we are all connected

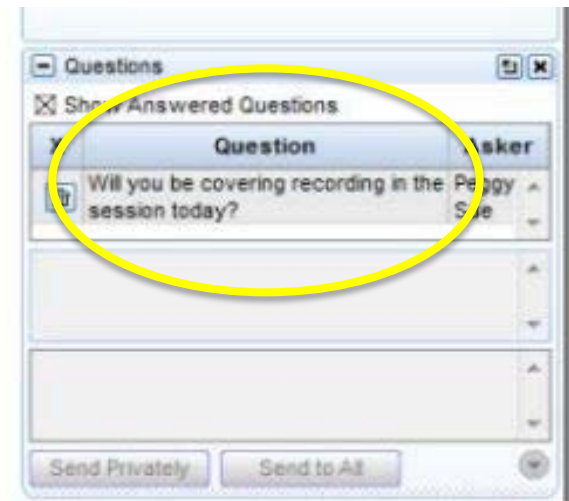
## Audio options

- Mic & Speakers
- Telephone: Use your phone to dial the number in the "Audio" section of the webinar panel. When prompted, enter your access code and audio pin.



## Have questions?

Please use the "Questions" section in the webinar panel to submit any questions or concerns you may have. Our panelists will answer questions at the end of the presentation.





# Today's presenters

- Bob Crittenden, Special Assistant for Health Reform, Governor's Office
- Dorothy Teeter, Director, Health Care Authority (HCA)
- Nathan Johnson, Chief Policy Officer, HCA
- Carla Reyes, Assistant Secretary, Behavioral Health Administration, Dept. Social and Health Services,
- Laura Blaske, Strategic Communications and Planning Director, Health Systems Transformation, Department of Health
- Webinar Facilitator: Laura Zaichkin, Deputy Chief Policy Officer, HCA



# Today's agenda

- Review Healthier Washington objectives
- Making Strides
- Review Progress in Year One:
  - Paying for Value
  - Whole-Person Care
  - Behavioral Health Organizations
  - Regional Collaboration
  - Practice Transformation: The Hub
  - Progress Through Collaboration
- Questions & Answers

# The Healthier Washington 'selfie'

- Healthier Washington is the state's vision and plan for transforming health in our state.
- The state is using its market purchasing power to shift to paying for value over volume.
- Healthier Washington applies federal funds and state resources to lay the foundation for a sustainable health system transformation that improves community health.



# Making strides

- ✓ Build healthier communities through a collaborative regional approach.
- ✓ Ensure health care focuses on the whole person.
- ✓ Improve how we pay for services.





# Making strides

- Performance measures
- Fully-integrated managed care
- Accountable Communities of Health
- Accountable Care Networks
- Shared decision making
- Workplace innovation through community health workers



# Progress in Year One: Paying for Value





# Paying for Value: Accountable Care Networks for state employees

## Goals

- Improved patient experience
- Integrated “head and body” care
- Financial and clinical accountability

## 2016 Partners

- UW Medicine Accountable Care Network
- Puget Sound High Value Network LLC

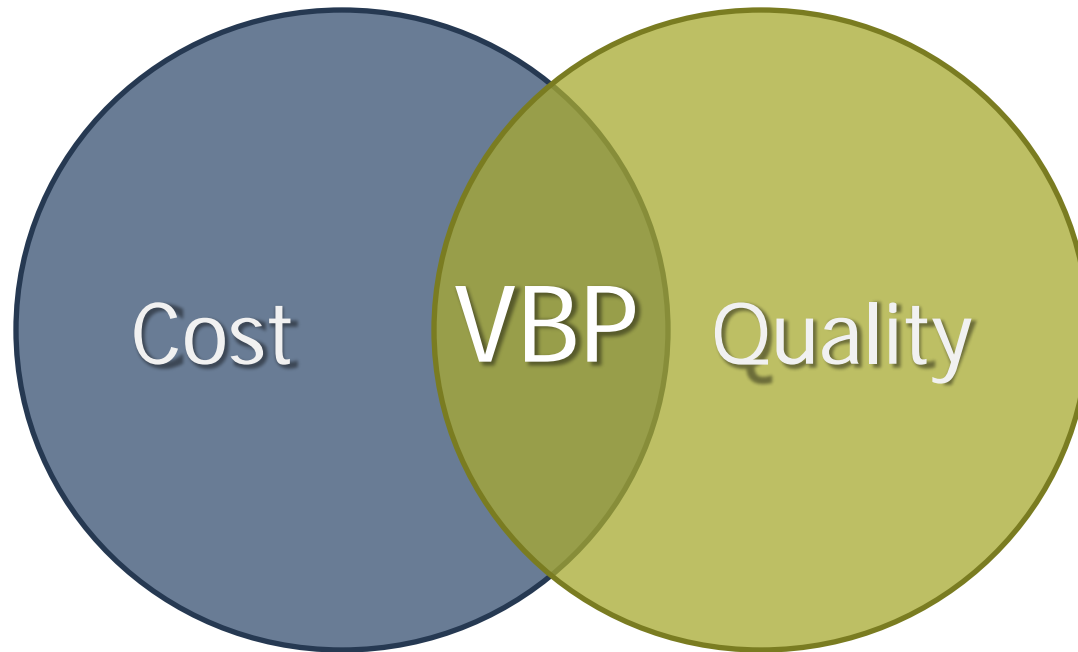
## 2017

- Expand statewide
- Recruit more employers and purchasers to join and implement approach

**Currently available to public employees in Puget Sound region**

# Value-Based Payments (VBP)

Outcomes > # Services



Defined Patient/Employee Population



# Value-based purchasing strategy

Status Quo (Volume-Based) System	Transformed (Value-Based) System
<b>Fragmented</b> clinical and financial approaches to care delivery	<b>Integrated</b> systems that pay for and deliver whole person care
<b>Uncoordinated</b> care and transitions	<b>Coordinated</b> care and transitions
<b>Unengaged</b> members left out of their own health care decisions	<b>Engaged and activated</b> members who are connected to the care they need and empowered to take a greater role in their health
<b>Variation</b> in delivery system performance (cost and quality) with no ties to clinical or financial <b>accountability</b> and <b>transparency</b>	<b>Standardized performance measurement</b> with clinical and financial <b>accountability</b> and <b>transparency</b> for improved health outcomes

# Whole-person care

## In Clark and Skamania counties:

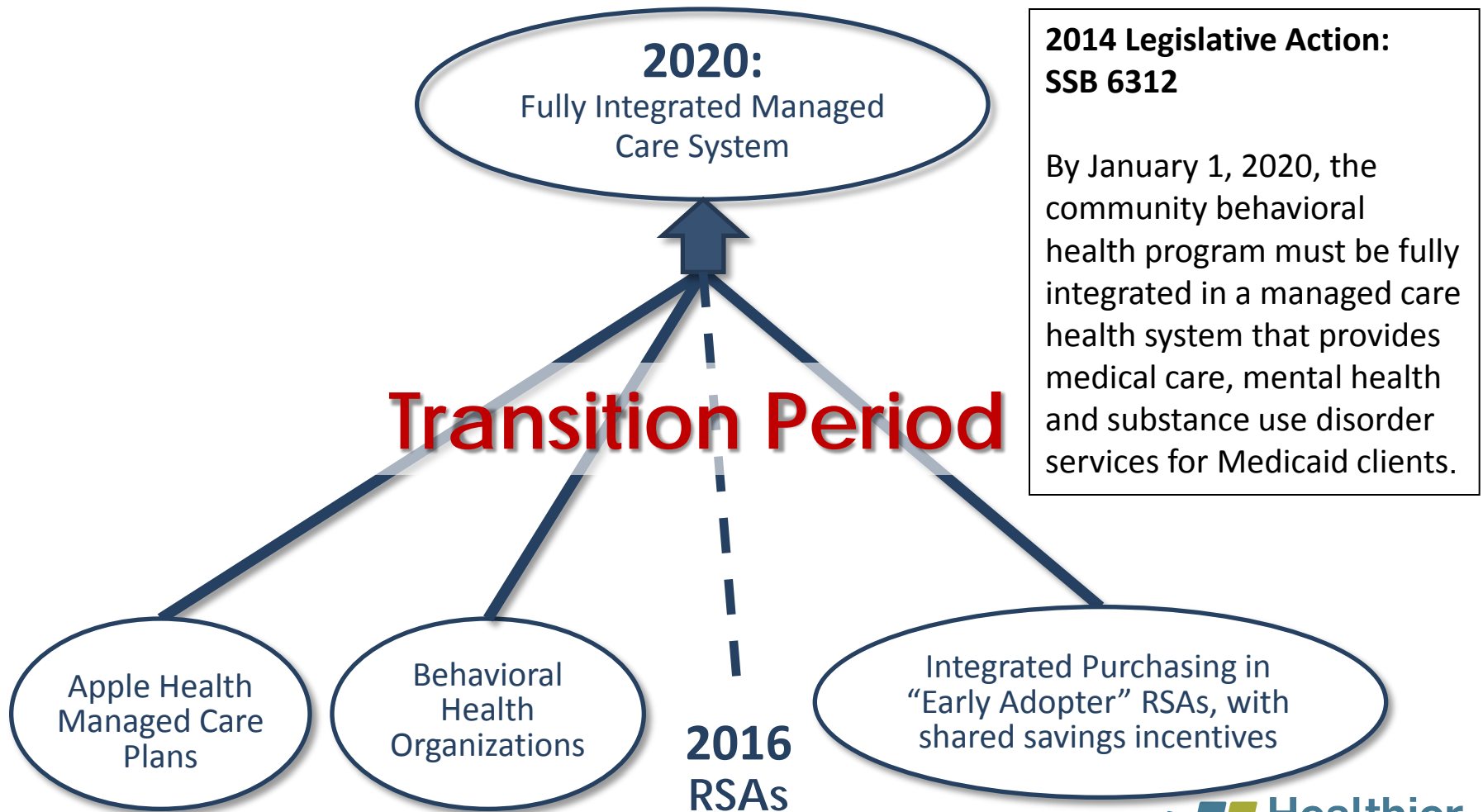
Whole-person care is delivered through managed care plans responsible for keeping patients well – both the mind and body.



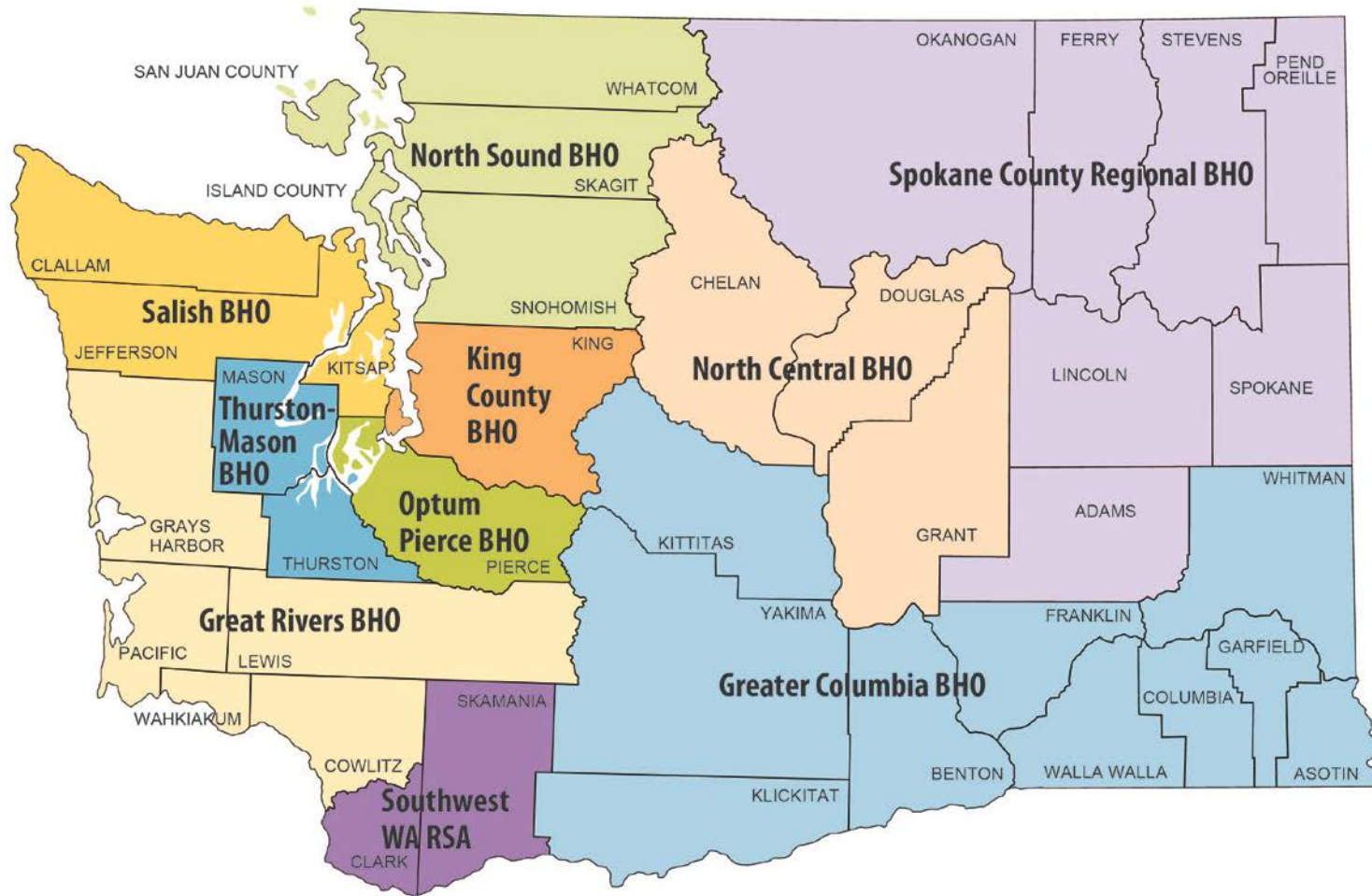
**COMMUNITY HEALTH PLAN**  
of Washington™



# Parallel Paths to Purchasing



# Behavioral Health Organizations



# Integrated funding and services for behavioral health and substance use disorder treatment

## Behavioral Health Organizations

- Bring new resources to reach persons with substance use disorders.
- Build on robust continuum of behavioral health services.
- Improved coordination of care for complex needs, utilizing BHO safety-net of crisis intervention, behavioral health treatment, social services, and healthcare providers.





# Progress in Year One: Regional Collaboration

# Regional collaboration: Accountable Communities of Health





# Regional collaboration

Accountable Communities of Health are:

- Bringing together diverse public and private community partners to work on shared regional health goals.
- Identifying opportunities for the ACH and community partners to understand and bridge health and quality of life issues.
- Coordinating systems so that services address all aspects of health at both the community and individual levels.

# Regional collaboration

ACHs strengthening collaboration at local level



# Regional collaboration

- Making community/clinical linkages
- Community networking
- Addressing all factors that impact health



2016 Cascade Pacific Action Alliance ACH meeting.

# Progress in Year One: Practice Transformation



# Practice Transformation: The Hub

- Healthier Washington is supporting transformation of the health delivery system through investment in knowledge, training and tools that:
  - effectively coordinate care
  - create community linkages
  - promote transition to value-based payment models





# Practice Transformation: The Hub

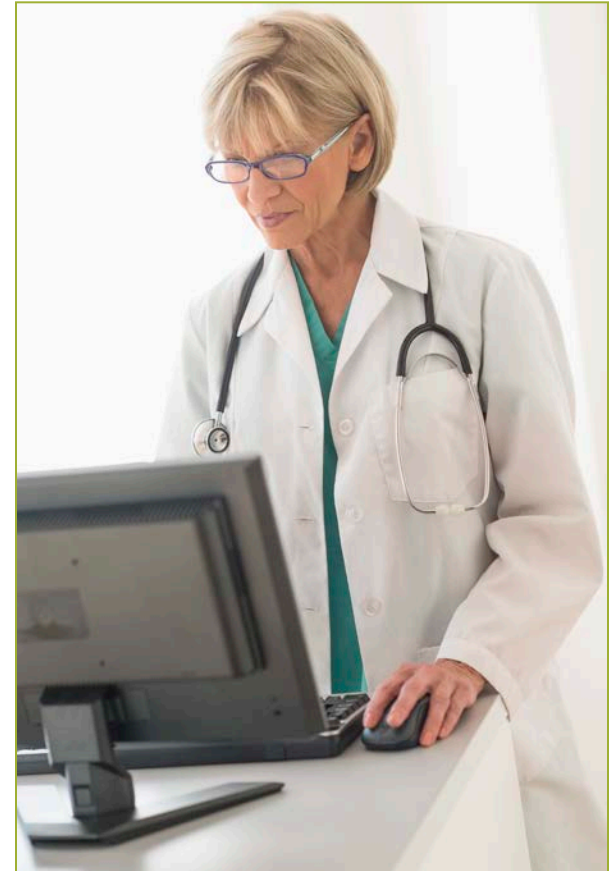
Connectors will guide providers through:

- Practice coaching
- Communication and referrals to technical assistance
- Training
- Robust and effective linkages

# Practice Transformation: The Hub

Web portal to offer a range of tools and resources that are:

- Sorted by regional service area
- Evidence-based and tied to best practices
- Supporting the aims of practice transformation





# Progress through collaboration

- American Indian Health Commission for Washington State
- Community Health Worker Task Force
- Early Adopter Implementation Team
- Performance Measures Coordinating Committee
- Plan for Improving Population Health External Advisory Group
- Health Innovation Leadership Network

# Progress through collaboration

- Clinical engagement
- Communities and equity
- Integrated physical and behavioral health
- Rural health innovation
- Collective responsibility



2016 Health Innovation Leadership Network meeting



# Progress through collaboration

## How to join the Feedback Network:

- Sign yourself up on our website:
  - [www.hca.wa.gov/hw](http://www.hca.wa.gov/hw)

or

- Send an email to:  
[healthierwa@hca.wa.gov](mailto:healthierwa@hca.wa.gov) and ask to be added to the Feedback Network.

Questions?

# Have questions?

Please use the “Questions” section in the webinar panel to submit any questions you may have.







# Today's presenters

- **Bob Crittenden**  
Special Assistant for Health Reform, Governor's Office
- **Dorothy Teeter**  
Director, Health Care Authority (HCA)
- **Nathan Johnson**  
Chief Policy Officer, HCA
- **Carla Reyes**  
Assistant Secretary, Behavioral Health Administration,  
Department Social and Health Services
- **Laura Blaske**  
Strategic Communications and Planning Director, Health  
Systems Transformation, Department of Health

## Contact us:

**Email:**

[healthierwa@hca.wa.gov](mailto:healthierwa@hca.wa.gov)  
(Send us a message to join our  
feedback network)

**Website:**

[www.hca.wa.gov/hw](http://www.hca.wa.gov/hw)

The project described was supported by Funding Opportunity Number CMS-1G1-14-001 from the U.S Department of Health and Human Services, Centers for Medicare & Medicaid Services. The contents provided are solely the responsibility of the authors and do not necessarily represent the official views of HHS or any of its agencies.

